







Floating Mountain Tea School

Secrets of Gongfu Cha

*Awaking of a Tea Master - Advanced*

## **Session 10 - Gongfu Cha Technicality**

FLOATING MOUNTAIN | Tea School | SS 3.10

# Gong Fu Cha Technicality

## Ten Characteristics of Gong Fu Tea



- \* Use of a charcoal stove;
- \* Water boiling methods;
- \* Refreshing tea by baking;
- ✓ \* Dry brewing technique;
- \* Small clay teapot;
- ✓ \* “Tea gall” leaves loading;
- ✓ \* The correct way to dispense water;
- ✓ \* Identification of steeping duration;
- \* Proper pour from the tea pot to cups;
- ✓ \* Number of brewing appropriate for gong fu.





# Gong Fu Cha Technicality

## Charcoal Stove



*Charcoal stove known as a 风炉*





# Gong Fu Cha Technicality

## Water Boiling



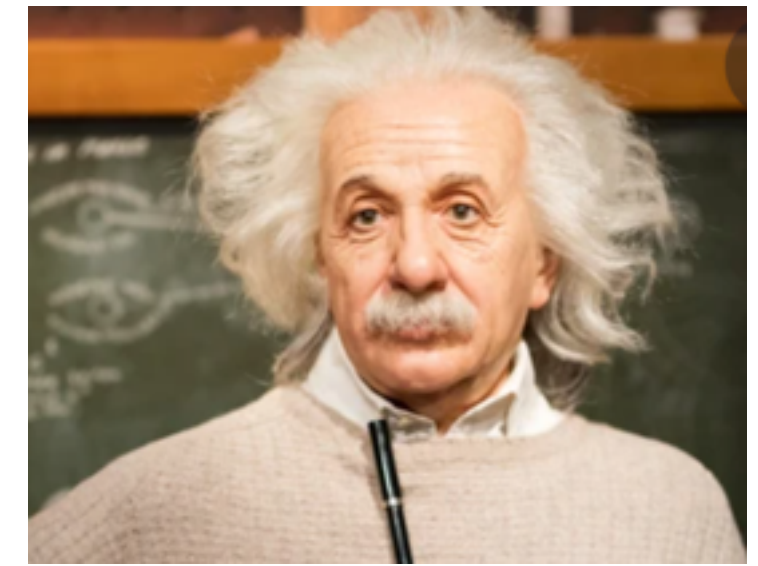
80 C = 176F



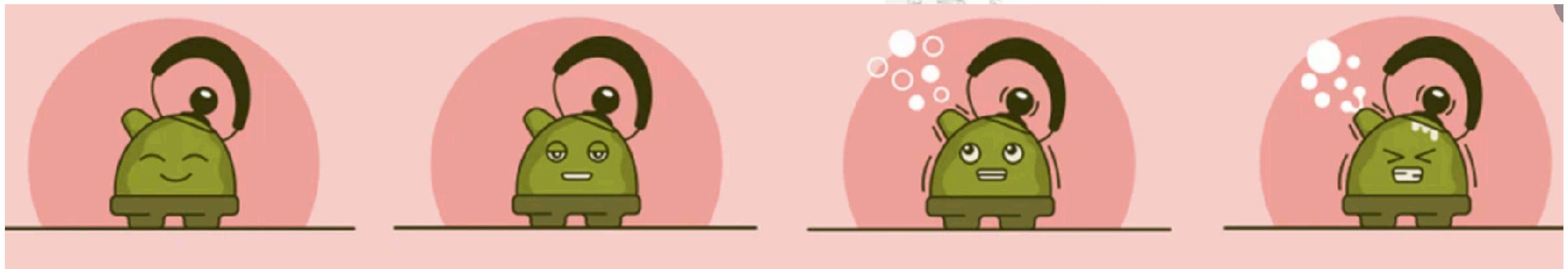
87 C = 189F



91 C = 196F



100 C = 212F





# Gong Fu Cha Technicality

## Baking Tea





# Gong Fu Cha Technicality

## Small Tea pot





# Gong Fu Cha Technicality

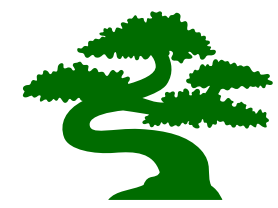
Pour from Teapot to Cups





# Gong Fu Cha Technicality

## Five Elements & Gongfu Cha



\* Hun - Con-Corporeal Soul



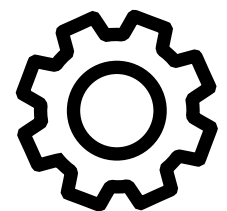
\* Shen - Small Spirit



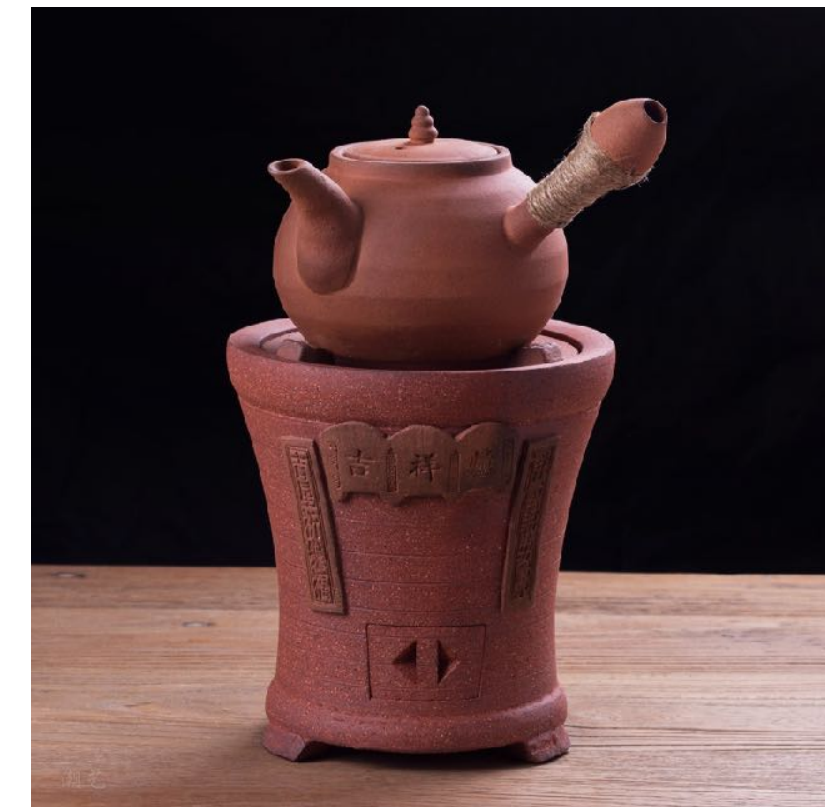
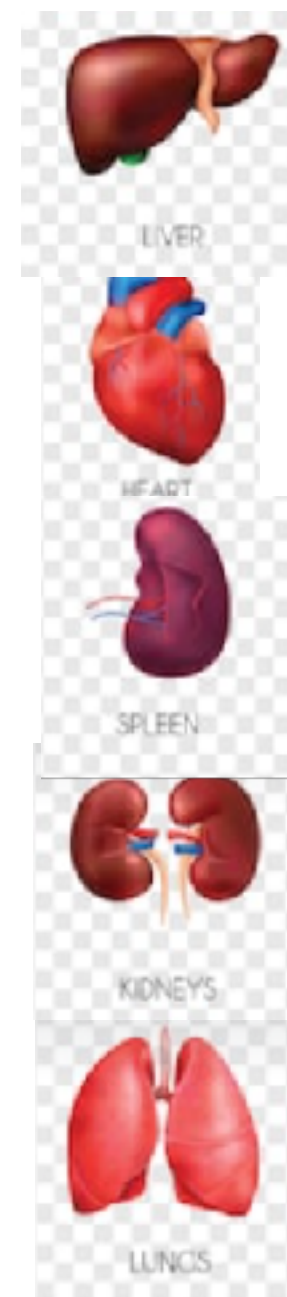
\* Yi - Conscious Potential



\* Zhi Will



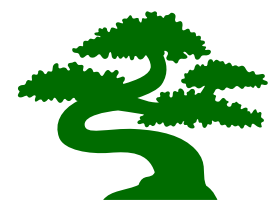
\* Po - Animal Spirit





# Gong Fu Cha Technicality

## Five Elements & Gongfu Cha



\* Hun - Con-Corporeal Soul



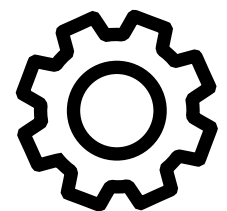
\* Shen - Small Spirit



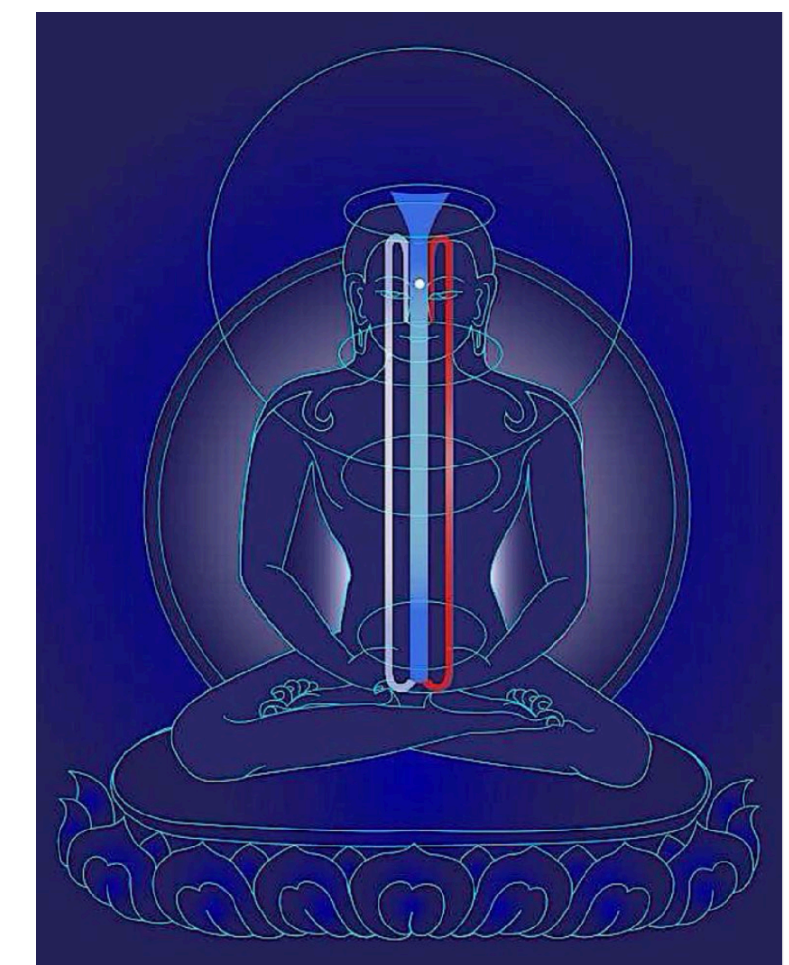
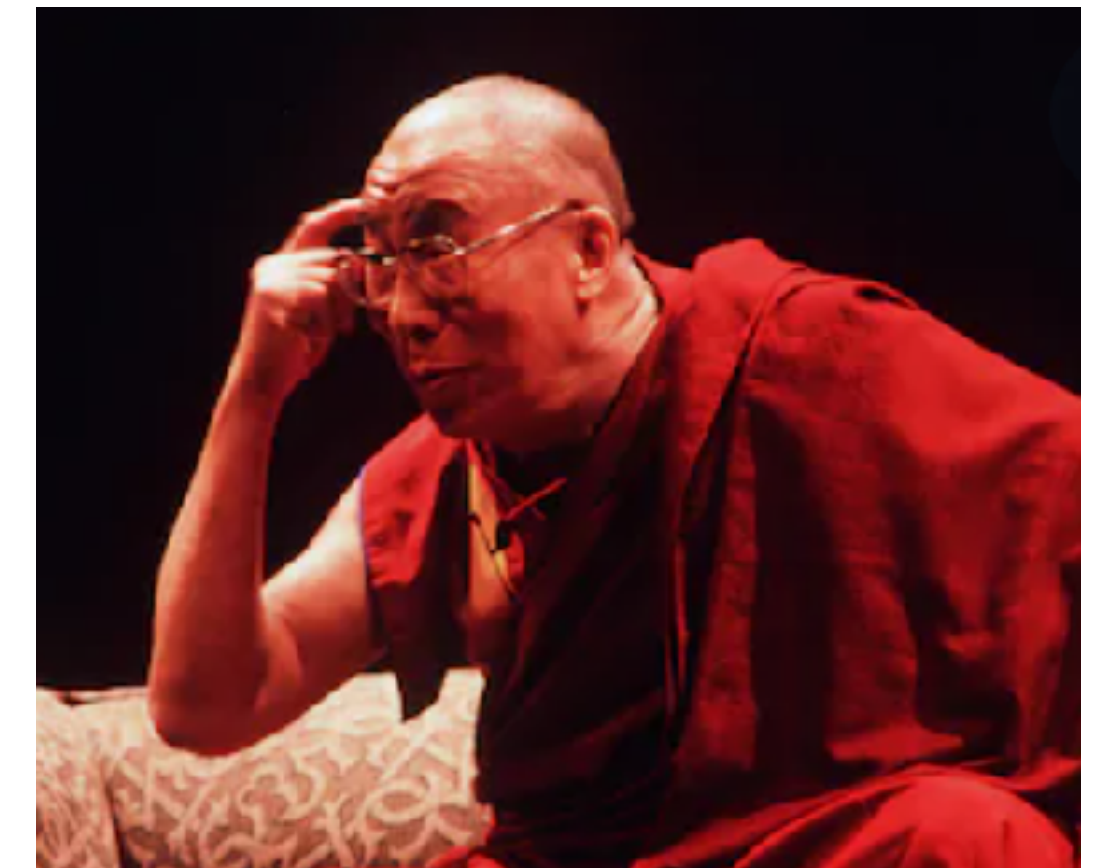
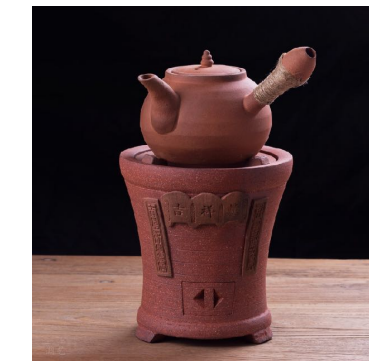
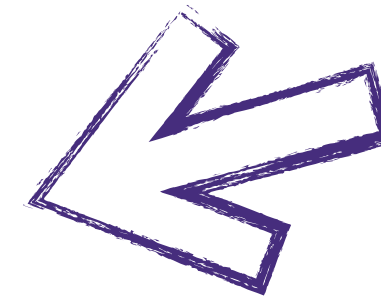
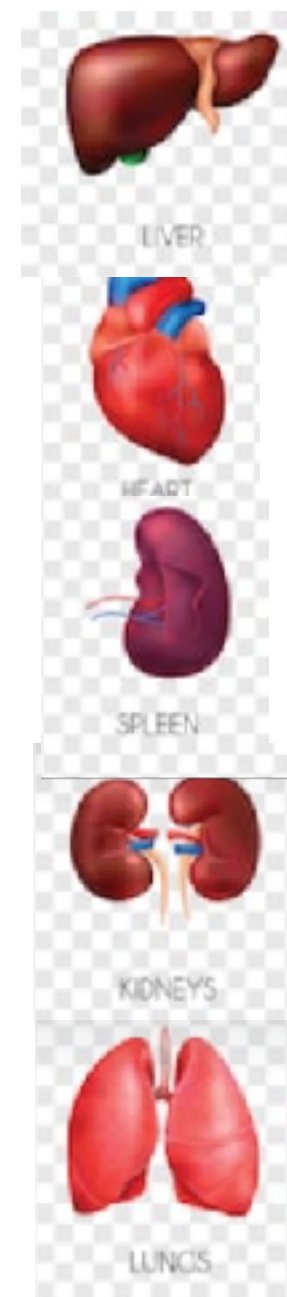
\* Yi - Conscious Potential



\* Zhi Will

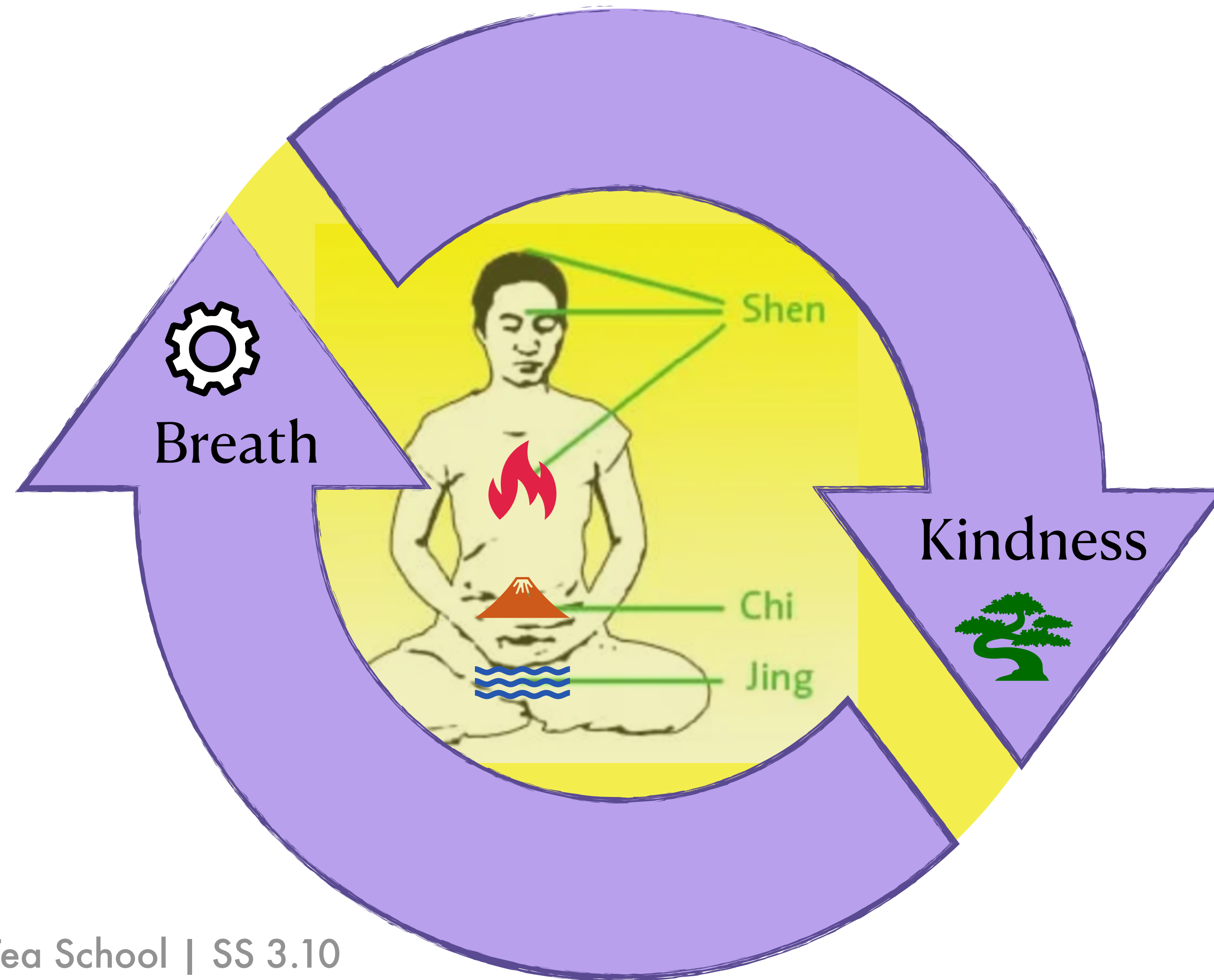


\* Po - Animal Spirit





# Gong Fu Cha





# Gong Fu Cha Technicality

## Ten Characteristics of Gong Fu Tea



- ✓\* Use of a charcoal stove;
- ✓\* Water boiling methods;
- ✓\* Refreshing tea by baking;
- ✓\* Dry brewing technique;
- ✓\* Small clay teapot;
- ✓\* “Tea gall” leaves loading;
- ✓\* The correct way to dispense water;
- ✓\* Identification of steeping duration;
- ✓\* Proper pour from the tea pot to cups;
- ✓\* Number of brewing appropriate for gong fu.





# Gong Fu Cha Technicality

## Homework



### **Prepare Gongfu Cha with Sample #4:**

1. Focus on technical aspects of Gongfu brewing
2. Access your areas for improvement
3. Reference back to appropriate class materials
4. Make gongfu tea again.



# Series 3 - Physicality of Tea - Advanced

## Gongfu Tea - January

Session 7 - Essence

Session 8 - Spirits

Session 9 - Gongfu Tea (demo)

Session 10 - Gongfu Tea Technicality\*

Session 11 - Practical Gong Fu\*\* (CW)

Session 12 - Q&A for Practical Gongfu

Session 13 - Mastery check \*\*

Session 14 - Gongfu Tea Together \*\*

